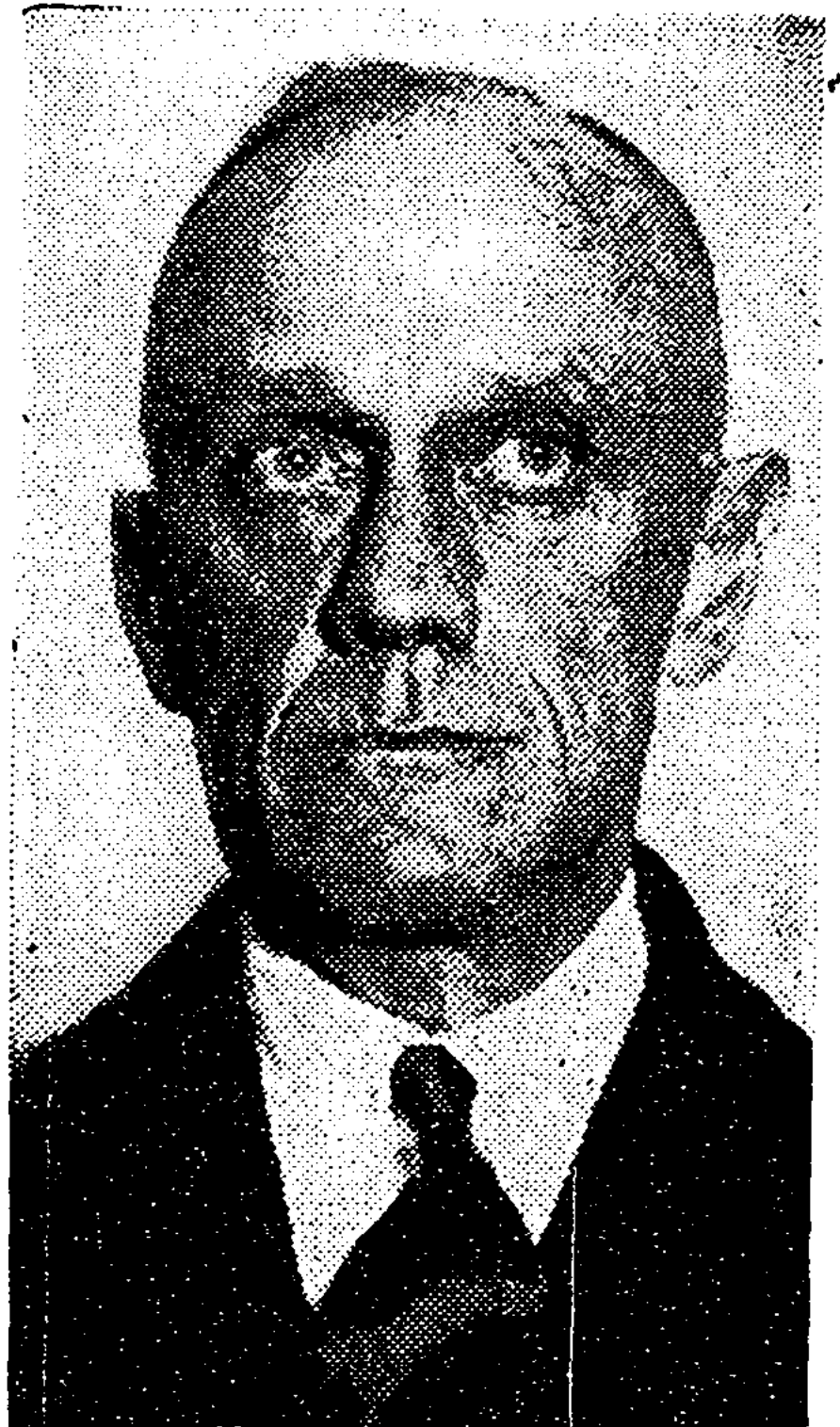


EDMUND LANG DIES; YACHTING OFFICIAL

Chairman of Committee for the
America's Cup Races in 1930,
1934 and 1937 Stricken

A RETIRED INDUSTRIALIST

Ex-Head of Crocker-Wheeler
Electric Co. and Director
of Remington Arms Co.



EDMUND LANG

Times Wide World, 1931

Edmund Lang, a well known yachtsman who served as chairman of the race committee for the America's Cup races off Newport, R. I., in 1930, 1934 and 1937, died of a heart attack last night shortly before the train on which he was returning from Wilmington, Del., arrived at the Pennsylvania Station.

Mr. Lang, who was 60 years old, had been to Wilmington to attend a meeting of the board of directors of the Remington Arms Company. His home was at 1 Grace Court, Brooklyn.

Mr. Lang was widely known in yachting circles in this country and in England as an expert navigator, mathematician and sailor.

A member of the New York Yacht Club since 1913, he had been on its race committee since 1925, serving as chairman from 1930 to 1939. He laid out the courses for the America's Cup races, decided on the starting times and worked for many months on details in preparation for this leading event in international yachting.

He was born in New York and began his business career with Westinghouse, Church, Kerr & Co., electrical contractors. He later joined the Crocker-Wheeler Electric Manufacturing Company, 30 Church Street, and served as its president for more than fifteen years until his retirement last year. He was also vice president of the Curtis Gas Engine Company and a director of the Remington Arms Company.

He began racing half-raters and catboats off Sea Gate many years ago, and later was skipper of larger boats which he raced in Long Island Sound. In 1913 he bought the sloop Banzai, one of the original New York Thirties built by Herreshoff in 1905, and raced her with consistent success until a few weeks before his death.

He was a member of the Seawanhaka, Corinthian, and Belle Harbor Yacht Clubs, a former commodore of the Manhasset Bay Yacht Club, and a member of the Cruising Club of America and the Railroad Machinery Club. He had contributed many articles on yachting and racing to periodicals.

He leaves a brother, Charles Lang, and a sister, Miss Louise Lang, both of the Grace Court address.